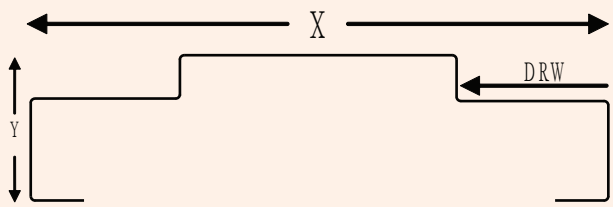


FRAME PROFILE (DOOR & WINDOW)

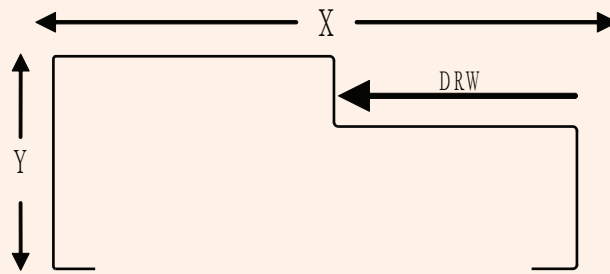
STANDARD FRAME PROFILE

Profile Code = **DR**
Profile Name = **Double Rebated**



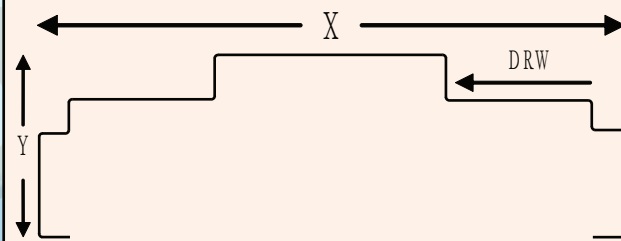
Profile Width (X) = Min 80mm to Max 200mm
Profile Height (Y) = Min 20mm to Max 65mm

Profile Code = **SR**
Profile Name = **Single Rebated**



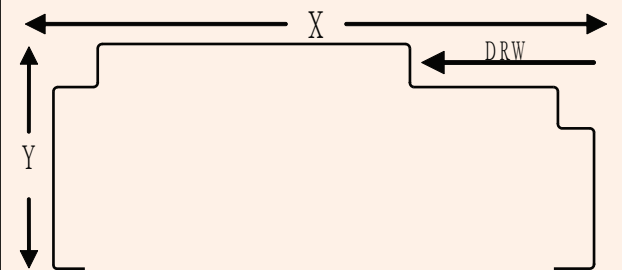
Profile Width (X) = Min 80mm to Max 200mm
Profile Height (Y) = Min 20mm to Max 65mm

Profile Code = **DR**
Profile Name = **Double Rebated with Architrave**



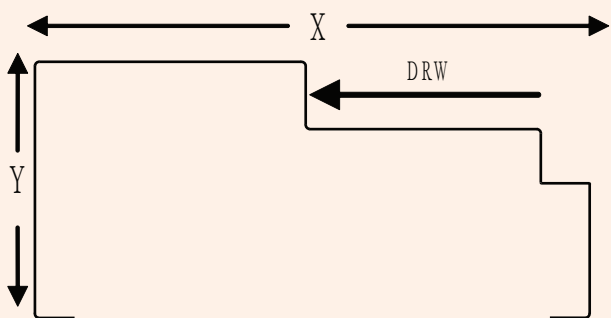
Profile Width (X) = Min 100mm to Max 180mm
Profile Height (Y) = Min 40mm to Max 65mm

Profile Code = **SRA**
Profile Name = **Single Rebated with Architrave**



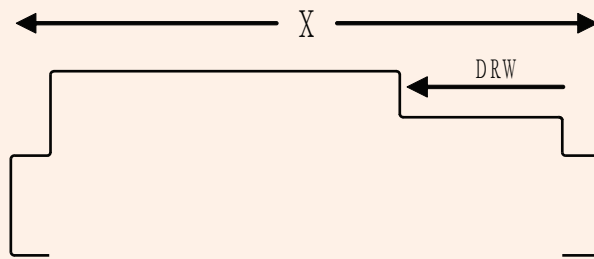
Profile Width (X) = Min 100mm to Max 180mm
Profile Height (Y) = Min 40mm to Max 65mm

Profile Code = **SR**
Profile Name = **Single Rebated**



Profile Width (X) = Min 100mm to Max 180mm
Profile Height (Y) = Min 40mm to Max 65mm

Profile Code = **DR**
Profile Name = **Double Rebated with Architrave**



Profile Width (X) = Min 100mm to Max 180mm
Profile Height (Y) = Min 40mm to Max 65mm

REMARKS : DRW = Doorleaf Rebate Width

For 35mm - 38mm Doorleaf (DRW= 40mm)

For 42mm Doorleaf (DRW = 45mm)